

# City of Sheridan Engineer Update

March 2024

# Sheridan Road

**Status:** Design selected. Focusing on waterline improvements.



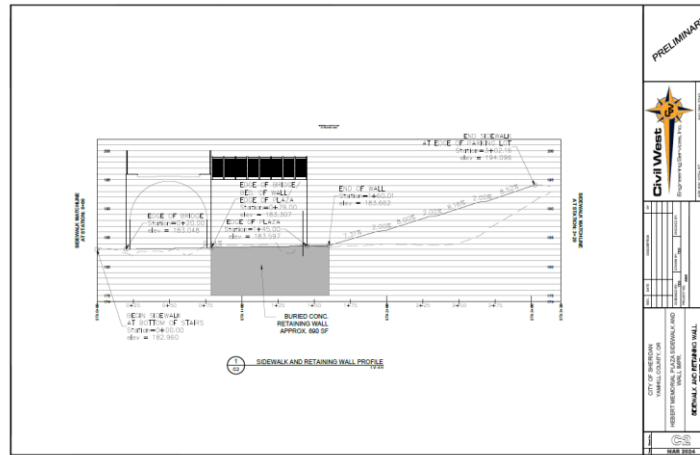
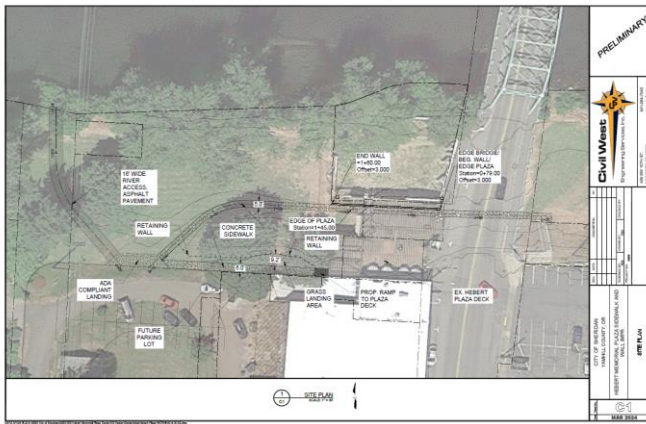
**Civil West**

Engineering Services, Inc.



# Hebert Memorial Plaza

- **Status:** Finishing draft design for review.



# Water Master Plan

Status: Developing water system model.

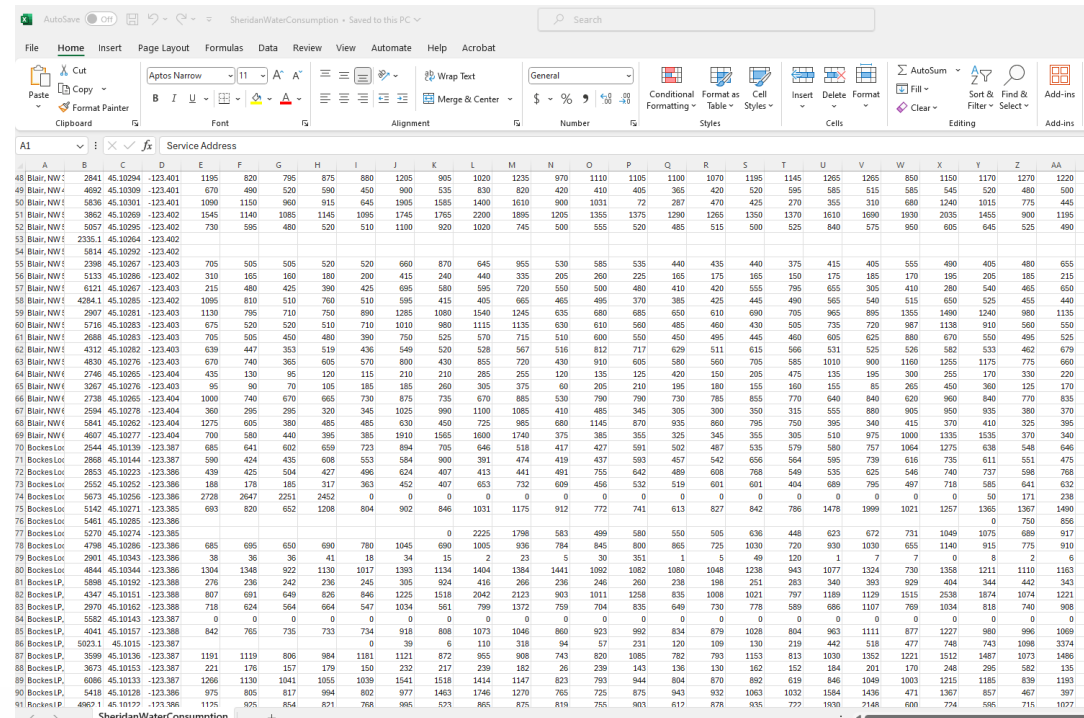
**City of Sheridan**

**Water System Master Plan Update**



**Civil West**  
Engineering Services, Inc.

Civil West Engineering  
409 SW 10<sup>th</sup> Street  
Newport, OR 97365



The screenshot shows an Excel spreadsheet with the following data structure:

	A	B	C	D	E	F	G	H	I	J	K	L	M	N	O	P	Q	R	S	T	U	V	W	X	Y	Z	AA
48	Blar_NW	2841	45.10204	123.401	1195	620	795	875	888	1295	805	1020	1235	970	1110	1105	1100	1070	1195	1145	1265	1265	850	1150	1170	1270	1220
49	Blar_NW	4620	45.10309	123.401	670	490	520	900	450	900	535	830	620	420	410	405	365	420	520	595	585	515	585	545	520	480	500
50	Blar_NW	5836	45.10301	123.401	1090	1150	960	915	645	1905	1585	1400	1610	900	1031	72	287	470	425	270	355	310	680	1240	1015	775	445
51	Blar_NW	3862	45.10289	123.402	1545	1140	1085	1145	1095	1745	1765	2200	1895	1205	1355	1375	1290	1265	1350	1170	1810	1690	1930	2035	1455	900	1195
52	Blar_NW	5057	45.10295	123.402	730	595	480	520	510	1100	920	1020	745	500	555	520	485	515	500	525	840	575	950	605	645	525	490
53	Blar_NW	2235.1	45.10264	123.402																							
54	Blar_NW	5814	45.10292	123.402																							
55	Blar_NW	2398	45.10267	123.403	705	505	505	520	520	660	870	645	955	530	585	535	440	435	440	375	415	405	555	490	405	480	655
56	Blar_NW	6133	45.10288	123.402	310	185	190	180	200	415	240	440	335	205	280	225	165	175	165	150	175	185	205	185	215	215	215
57	Blar_NW	6121	45.10267	123.403	215	480	425	390	425	685	580	595	720	550	590	480	410	420	555	795	655	305	410	280	540	465	650
58	Blar_NW	4284.1	45.10285	123.402	1095	810	510	760	510	595	415	405	665	465	495	370	385	425	445	490	565	540	515	650	525	455	440
59	Blar_NW	2907	45.10281	123.403	1130	795	710	750	890	1285	1080	1540	1245	635	680	685	650	610	690	705	965	895	1355	1490	1240	980	1135
60	Blar_NW	5716	45.10283	123.403	675	520	520	510	710	1010	980	1115	1135	630	610	560	485	460	430	505	735	720	987	1138	910	560	550
61	Blar_NW	3008	45.10283	123.403	705	505	450	480	390	750	525	570	715	510	600	550	450	495	445	460	605	625	880	670	550	465	525
62	Blar_NW	4112	45.10282	123.403	630	447	353	519	436	540	520	528	516	812	717	620	511	615	566	531	525	526	612	533	622	679	679
63	Blar_NW	4830	45.10276	123.403	670	740	365	605	570	800	430	855	720	430	910	605	580	560	705	585	1010	900	1160	1255	1175	775	660
64	Blar_NW	2746	45.10265	123.404	435	130	95	120	115	210	210	285	255	120	135	125	420	150	205	475	135	195	300	255	170	330	220
65	Blar_NW	2367	45.10276	123.403	95	90	70	105	185	185	260	305	375	60	205	210	195	180	155	190	155	85	265	450	980	125	170
66	Blar_NW	2738	45.10265	123.404	1090	740	670	665	730	875	735	670	865	520	790	790	730	765	655	770	640	840	620	960	840	770	635
67	Blar_NW	2594	45.10278	123.404	360	295	295	320	345	1025	990	1105	1085	410	485	345	305	300	350	315	555	880	905	950	380	370	370
68	Blar_NW	5841	45.10262	123.404	1275	605	380	485	485	630	450	725	885	680	1145	870	935	860	795	750	395	340	415	370	410	325	395
69	Blar_NW	4607	45.10277	123.404	700	580	440	395	385	1910	1565	1600	1740	375	385	355	325	345	355	305	510	975	1000	1335	1535	370	340
70	BockesLoc	2544	45.10139	123.387	685	641	602	659	723	884	705	646	518	417	427	591	502	487	535	578	580	717	1064	1275	638	548	646
71	BockesLoc	2868	45.10144	123.387	590	424	435	608	553	584	900	391	474	419	437	593	457	542	656	564	595	739	618	735	611	551	475
72	BockesLoc	2853	45.10223	123.386	439	425	496	638	407	413	441	491	755	642	489	608	768	549	535	625	546	740	737	598	768	768	
73	BockesLoc	2552	45.10252	123.386	188	178	185	317	363	452	407	653	732	609	456	532	519	601	601	404	689	795	497	718	585	641	632
74	BockesLoc	5673	45.10256	123.386	2728	2647	2251	2462	0	0	0	0	0	0	0	0	0	0	0	0	0	0	0	0	58	171	238
75	BockesLoc	5142	45.10271	123.385	693	820	820	1208	804	902	846	1031	1175	912	772	741	613	827	842	786	1478	1999	1021	1257	1365	1677	1400
76	BockesLoc	5461	45.10285	123.386																							
77	BockesLoc	5270	45.10274	123.385																							
78	BockesLoc	4798	45.10286	123.386	685	685	650	690	780	1045	690	1005	936	784	845	800	865	725	1030	720	930	1030	655	1140	915	910	
79	BockesLoc	2901	45.10343	123.386	38	36	36	41	18	34	15	2	23	5	30	351	1	5	49	120	1	7	7	0	8	2	6
80	BockesLoc	4844	45.10344	123.386	1304	1348	922	1130	1017	1393	1134	1404	1384	1441	1193	1082	1080	1048	1238	943	1077	1324	730	1358	1211	1110	1163
81	BockesLP	5886	45.10192	123.388	276	236	242	236	245	305	924	416	266	236	246	200	238	198	251	283	340	393	929	404	344	442	343
82	BockesLP	4347	45.10151	123.388	807	691	649	826	846	1225	1519	2042	2123	903	1011	1258	835	1008	1021	797	1189	1129	1515	2538	1874	1074	1221
83	BockesLP	2970	45.10162	123.388	718	624	564	664	547	1034	561	799	1372	759	704	835	649	720	778	589	685	1107	760	1034	818	740	908
84	BockesLP	5582	45.10143	123.387	0	0	0	0	0	0	0	0	0	0	0	0	0	0	0	0	0	0	0	0	0	0	0
85	BockesLP	4041	45.10157	123.388	842	765	735	733	734	918	808	1073	1046	860	923	952	834	879	1028	804	963	1111	877	1227	980	996	1089
86	BockesLP	5023.1	45.1015	123.387																							
87	BockesLP	3599	45.10136	123.387	1191	1119	896	984	1181	1121	872	955	996	743	820	1065	782	793	1153	815	1030	1352	1221	1512	1487	1073	1486
88	BockesLP	3673	45.10153	123.387	221	176	157	179	150	232	217	239	182	26	239	143	136	130	162	152	154	201	170	248	295	552	135
89	BockesLP	6086	45.10133	123.387	1266	1130	1041	1055	1039	1541	1518	1414	1147	823	793	844	804	870	892	619	848	1049	1003	1215	1185	839	1193
90	BockesLP	5438	45.10128	123.386	975	805	817	994	802	977	1463	1746	1270	765	725	875	943	932	1063	1032	1584	1436	471	1367	857	637	387
91	BockesLP	4803	45.10193	123.386	1135	925	854	871	768	985	623	965	875	819	755	983	617	878	935	722	1830	2148	690	734	598	715	1077

**Civil West**



Engineering Services, Inc.



# South Side Park Footbridge

**Status:** Preparing RFQ for a railcar style pedestrian bridge



**Civil West**

Engineering Services, Inc.

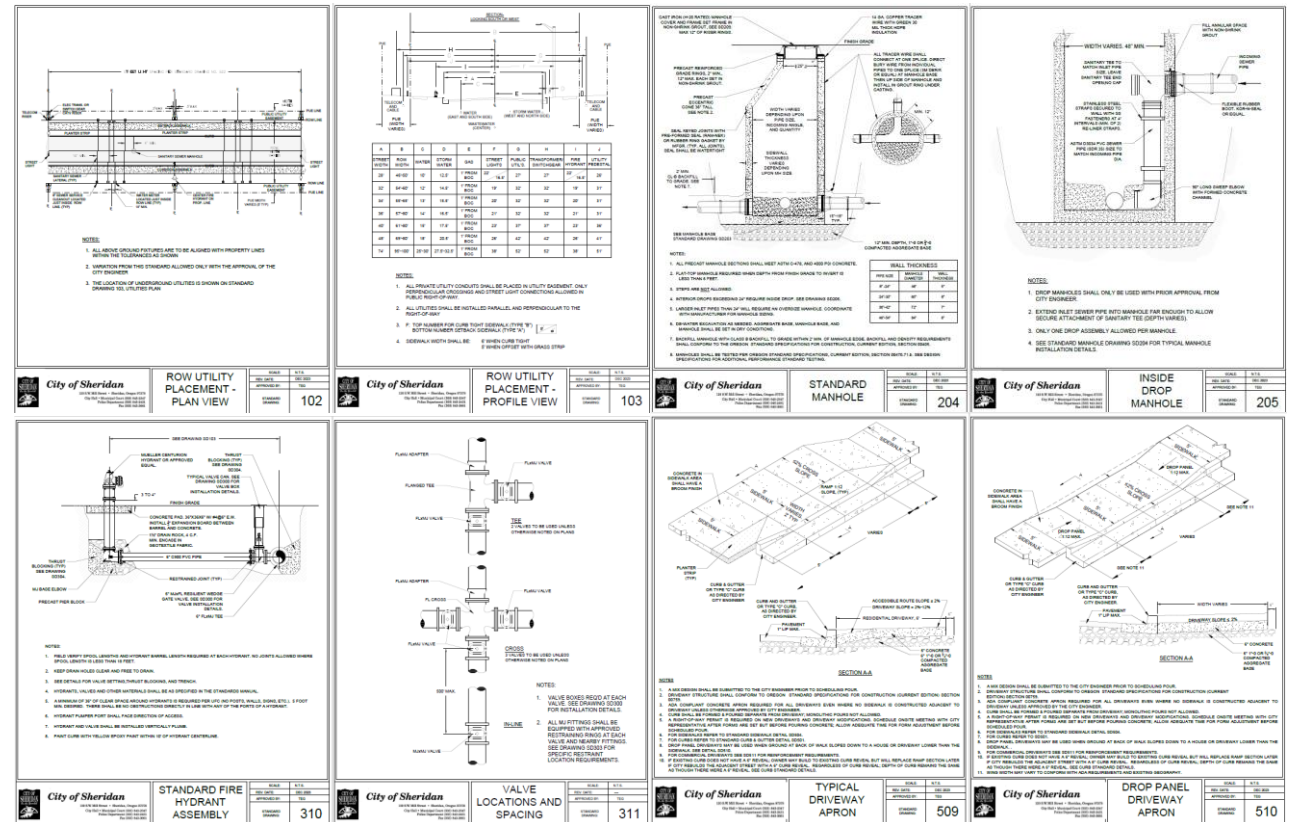


FG-413.15

# Public Works Design Standards

## Status:

- Preparing final revision after receiving feedback on design drawings draft.
- Finalizing draft of design standard text.



**Civil West**



Engineering Services, Inc.