



**Recology**<sup>TM</sup>

Western Oregon

**WASTE ZERO**

**City of Sheridan Council Meeting  
July 15, 2024 – 6:30 PM**



Recology | 2024

# Recology/Sheridan Partnership

---



## Tonight:

- Recology Overview
- Sheridan Collection Service Update
- Proposed rate adjustment
- News
- Questions





Mark Olsen wins the ROCStar award 2024!

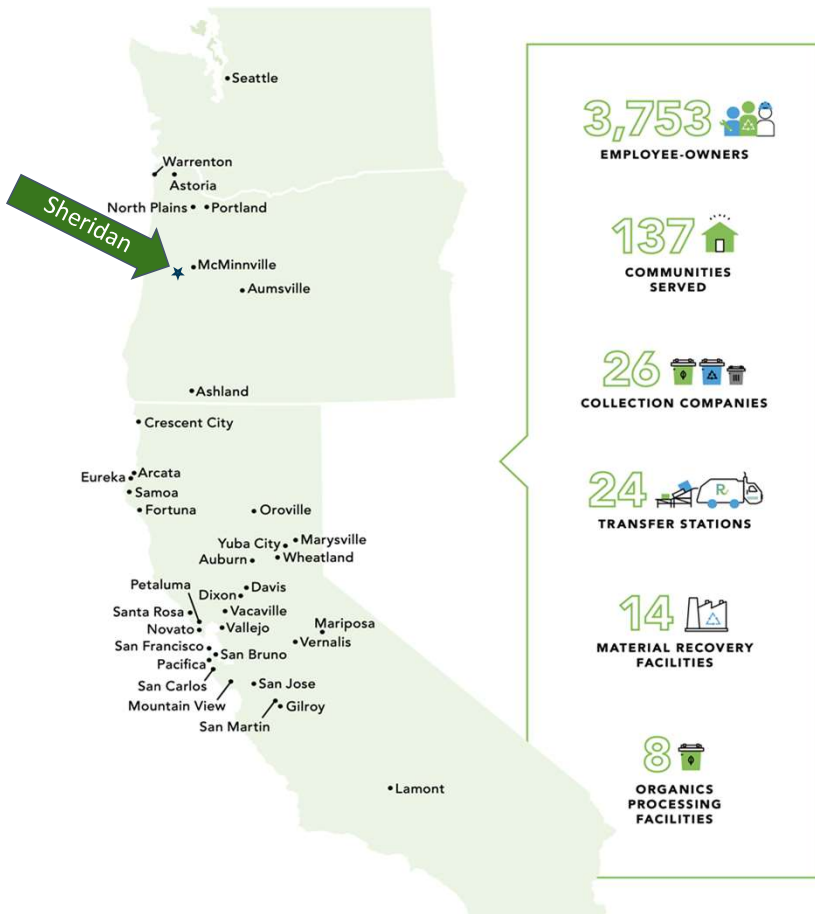
## Employee Ownership

# Anchoring Our Culture

Recology is the largest 100% employee-owned company in the resource recovery industry. Our Employee Stock Ownership Plan (ESOP) forms the core of our culture, leaving the stock in the hands of current and former employee-owners, not external shareholders.

Our ESOP is not just supplemental retirement income—it's a wealth accumulation opportunity that is shared among our workforce, promoting cohesion and fueling growth.

# Who We Are – Recology



# Who We Are – Recology Western Oregon

---

1. Transfer Stations – McMinnville and Astoria
2. Compost Facilities – McMinnville, Aumsville, North Plains
3. Portland Metro Area Operations
4. Residential, Multifamily, and Commercial collection services



# Recology – A Great Place to Work

---



- Employee Culture
  - Low turnover
  - Employee Ownership
  - Living Wages and Great Benefits
  - Strong leadership and development opportunities
- Our Sheridan Services...
  - Residential, Commercial, Multifamily, Drop Box
  - Residential Garbage & Recycling
  - Sheridan Recycling Depot



# Events & Services – Sheridan

- Yamhill County Fair
- McMinnville Air Show
- Sheridan Cleanup Event
- Other support...



# 2024 Rate Review – Proposed Collection Rates



- Inflationary Pressures
  - West Region CPI – 3.3%
  - Labor cost increases
  - Parts/Equipment price pressures
  - Fleet investments going forward
- Franchise: Rate Setting:
  - CPI Annual or Rate Review
  - Operating Range 85% - 91%
  - Target Operating Ratio = 88%
- Last years Actual Ratio: 94.82%
- Projection without a rate increase: 94.20%
- Seeking a 5.82% increase to get to 89.96%
- Effective August 1, 2024

RWO - Valley Cost of Service Report 2023-24

	RWO - Valley Total			City of Sheridan		
	2023 Calendar Year Actual	2024-25 Projected Rate Year	Allocation Method	2023 Calendar Year Actual	Adjustments and Projected Changes	2024-25 Projected Rate Year
REVENUE				Rate Adj. % >>>	5.82%	
Collection Services - Residential	\$ 8,842,892	\$ 9,171,741	Actual	\$ 446,701	\$ 22,979	\$ 469,681
Collection Services - Commercial	\$ 5,065,806	\$ 5,380,026	Actual	\$ 223,353	\$ 14,125	\$ 237,478
Collection Services - Debris Box	\$ 2,680,916	\$ 2,760,159	Actual	\$ 73,550	\$ 27,691	\$ 101,241
<b>COLLECTION SERVICES:</b>	<b>\$ 16,589,614</b>	<b>\$ 17,311,926</b>	<b>Actual</b>	<b>\$ 743,604</b>		<b>\$ 808,400</b>
Proposed Rate Adjustment			Actual			\$ 47,049
Revenue - DB Disposal			Actual	\$ 47,906	\$ -	\$ 47,906
Revenue - Medical Waste	\$ 96,211	\$ 96,096	Actual	\$ 1,619	\$ (11)	\$ 1,608
Revenue - Other (fees & related)	\$ 88,385	\$ 17,766	Actual	\$ 1,530	\$ (368)	\$ 1,163
Non-Franchised Revenue	\$ 1,001,587	\$ 1,096,840	Actual	\$ -	\$ -	\$ -
<b>Total Revenue</b>	<b>\$ 17,775,796</b>	<b>\$ 18,524,628</b>		<b>\$ 794,660</b>	<b>\$ 111,467</b>	<b>\$ 906,126</b>
Franchise Fees	\$ (725,042)	\$ (753,292)	Actual	\$ (23,848)		\$ (27,193)
Revenue w/o Franchise Fees	\$ 17,050,753	\$ 17,771,335		\$ 770,812		\$ 878,933
LABOR EXPENSES						
Operational Personnel	\$ 2,045,541	\$ 2,328,040	Labor Hours	\$ 95,026	\$ 13,124	\$ 108,149
Payroll Taxes	\$ 185,744	\$ 211,396	Labor Hours	\$ 8,629	\$ 1,192	\$ 9,820
Medical Insurance	\$ 463,989	\$ 498,717	Labor Hours	\$ 21,555	\$ 1,613	\$ 23,168
Other Benefits	\$ 247,330	\$ 310,751	Labor Hours	\$ 11,490	\$ 2,946	\$ 14,436
<b>Total Labor Expense</b>	<b>\$ 2,942,604</b>	<b>\$ 3,348,903</b>		<b>\$ 136,699</b>	<b>\$ 18,875</b>	<b>\$ 155,573</b>
Disposal Charges	\$ 2,906,178	\$ 3,064,136	Vessel Weights	\$ 172,214	\$ 9,360	\$ 181,574
Medical Waste & Supplies	\$ 46,708	\$ 47,642	Med. Waste	\$ 621	\$ 12	\$ 633
<b>Total Disposal Expense</b>	<b>\$ 2,952,886</b>	<b>\$ 3,111,778</b>		<b>\$ 172,835</b>	<b>\$ 9,373</b>	<b>\$ 182,207</b>

# 2024 Rate Review – Overview



- Proposed 5.82% - All Rates
- \$1.18 per month for weekly 32-gallon service
  - \$1.97 a month for weekly 90-gallon service

**RECOLOGY WESTERN OREGON**  
SHE CITY OF SHERIDAN

**SUMMARY RATE SHEET**  
EFF. DATE: 8/1/2024

CODE	DESCRIPTION	CURRENT RATE	INC %	INC \$\$	NEW RATE
<b>CART SERVICES - CURBSIDE</b>					
CURBSIDE: WITHIN 4 FEET OF THE CURB OR ROAD, AND AWAY FROM ALL CARS, MAIL BOXES, OR OTHER ITEMS.					
<b>32 GALLON CART SERVICE</b>					
				<b>MONTHLY RATES</b>	
32GWC	32G CART-CURB	\$ 20.31	5.82%	\$ 1.18	\$ 21.49
32GEC	32G CART EOW-CURBSIDE	\$ 13.20	5.82%	\$ 0.77	\$ 13.97
32GMC	32G CART MONTHLY CURB	\$ 7.09	5.82%	\$ 0.41	\$ 7.50
OC3C	32 GAL CART ON CALL CURB	\$ 7.09	5.82%	\$ 0.41	\$ 7.50
<b>90 GALLON CART SERVICE</b>					
				<b>MONTHLY RATES</b>	
90GWC	90G CART-CURB	\$ 33.83	5.82%	\$ 1.97	\$ 35.80
90GEC	90G CART EOW-CURB	\$ 21.99	5.82%	\$ 1.28	\$ 23.27
90GMC	90G CART OAM-CURB	\$ 11.85	5.82%	\$ 0.69	\$ 12.54
OC9C	90 GAL CART ON CALL CURB	\$ 11.85	5.82%	\$ 0.69	\$ 12.54

# What's Next – Sheridan

- Waste Zero Specialist
- Recovery Zone Recycling Improvements
- Recycling Modernization Act
  - uniform statewide recycling lists
  - recycling depot improvements
  - education and outreach (\$3 per capita)
  - reduced processing costs at MRFs
  - paid for by manufacturers
  - less pressure on rates for recycling system costs



# QUESTIONS?

---



Chris Carey – General Manager Oregon

[Ccarey@recology.com](mailto:Ccarey@recology.com)

Ernie Martin – Operations Manager Valley

[Emartin@recology.com](mailto:Emartin@recology.com)

Dan Blue – Government Relations Manager Northern Oregon

[Dblue@Recology.com](mailto:Dblue@Recology.com)

Recology Western Oregon

[rwoinfo@recology.com](mailto:rwoinfo@recology.com)

[www.recology.com](http://www.recology.com)

503-472-3176

